



# Installation and Setup Guide for CathexisObserver 2017.1

## Contents

1	Introduction .....	2
2	Installing CathexisObserver .....	4
	a. Follow the Installation Wizard .....	4
3	Get Licensed .....	5
	a. Open CathexisVision .....	5
	b. Select Tools → Licenses .....	5
	c. Retrieve a license .rqst file from the unit you wish to license .....	5
	d. Load the .pack File to Update Your License .....	5
4	Configure CathexisObserver Password (PC) .....	7
	a. Start Menu → All Programs/Apps.....	7
	b. Create Password .....	7
5	Add an Observer .....	8
	a. Open CathexisVision .....	8
	b. Open the Setup Tab and select the 'Configure Servers' Option .....	8
	c. Select the 'Cameras' in the drop down menu of the specific NVR you wish to record the Observer to.....	8
	d. Click 'New' from the selection of buttons at the bottom of the window.....	9
6	Uninstall.....	13
	a. Start → Control Panel .....	13
	b. Uninstall a Program.....	13
	c. Select the CathexisVision Program that You Want to Uninstall, and Click Uninstall.....	13

# 1 Introduction<sup>1</sup>

CathexisObserver is Cathexis software designed to record on-screen activity. It can record multiple screens on an individual computer, and can record the activity of any computer on the same network as the recording Windows NVR. **Observer only runs on Windows NVRs.**

In general it is a very useful application for any situation that would benefit from monitoring on-screen activity (e.g. banks, online examination rooms, Point of Sale systems etc.). To run CathexisObserver you will need to purchase the CathexisVision Windows NVR software, along **with the additional CathexisObserver software.**

You will also need an Encoder/IP camera license, as each screen/unit is treated as an encoder on the network. This means you are also able to record on motion, review, etc.

In a security setting it has more specific applications, beyond simply monitoring operator activity. For instance, since it records the point of view of the operator, it is possible to review an event that took place across multiple cameras by viewing the CathexisObserver recording, instead of pulling up and viewing multiple camera recordings.

The following guide will walk you through the process of installing CathexisObserver 2017.

---

<sup>1</sup> While Cathexis has made every effort to ensure the accuracy of this document, there is no guarantee of accuracy, neither explicit, nor implied. Specifications are subject to change without notice.

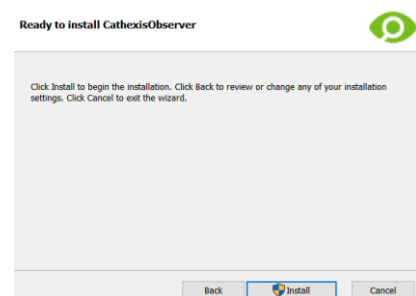
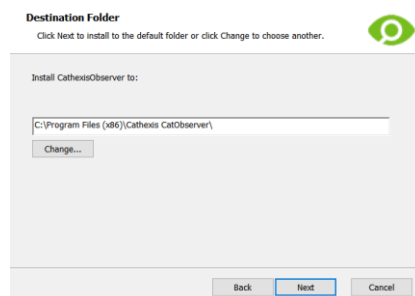
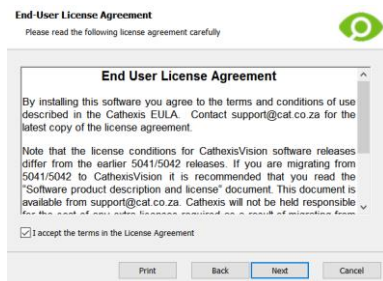
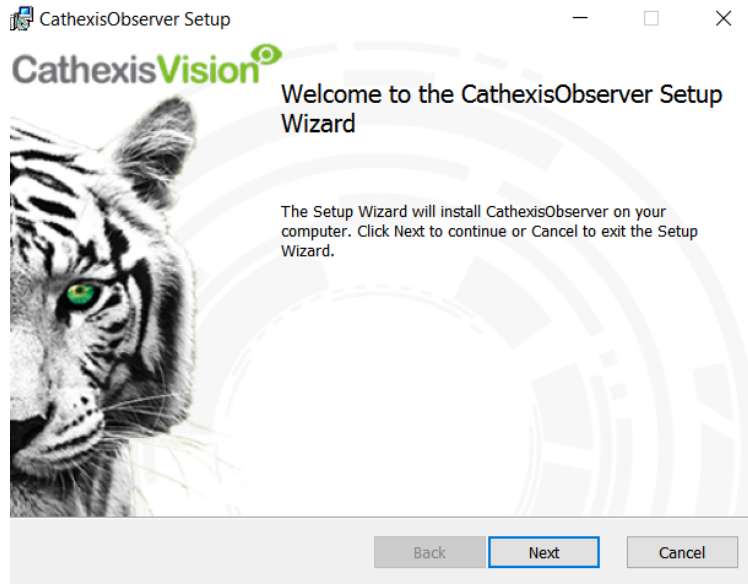


## 2 Installing CathexisObserver

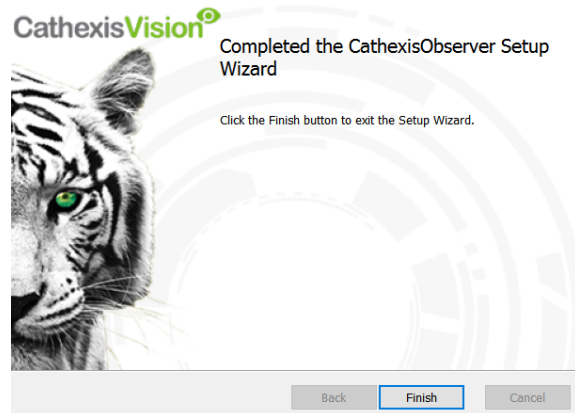
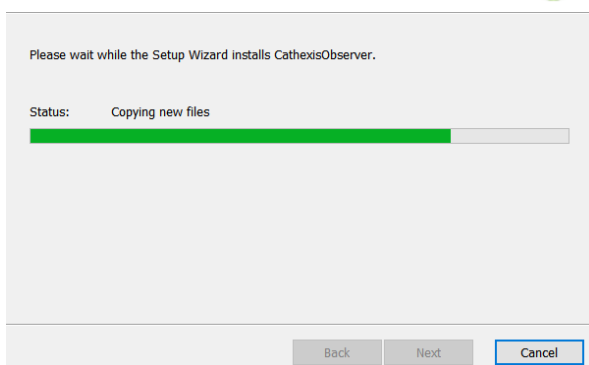
CathexisObserver must be installed on the computer whose screen is to be recorded, **it does not need to be installed on the NVR**. Start the setup process on the chosen computer by double-clicking CathexisObserver installer icon.



### a. Follow the Installation Wizard



### Installing CathexisObserver



## 3 Get Licensed

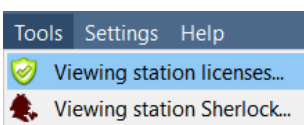
Before you can add an Observer to your NVR you need the required license (the relevant license is the same license required for IP cameras. So, if you are licensed for IP cameras, you don't need a new license). The licensing process is standard for all CathexisVision Suite Licenses.

Only the NVR to which the Observer will be recording needs to be licensed.

### a. Open CathexisVision



### b. Select Tools → Licenses



### c. Retrieve a license .rqst file from the unit you wish to license

← Licensing for (WIN adac0ab3be)

Please select a task

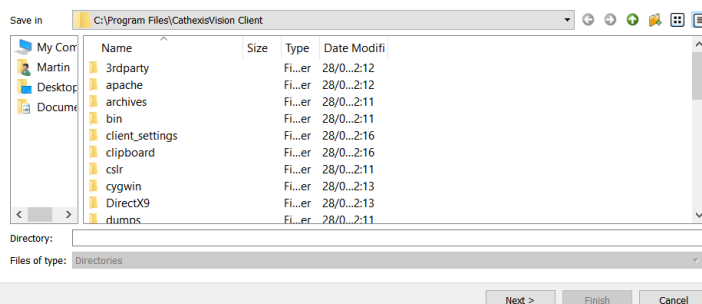
- Auto update this viewer's license
- License this viewer using a product key
- Retrieve a license .rqst file from this viewer
- Upload a license .pack file to this viewer
- Advanced options

Feature name Added Expires

After selecting *Retrieve a license .rqst file from this unit*, click 'Next' button.

← Licensing for (WIN adac0ab3be)

Retrieve a license .rqst file



Select a location into which you will save the .rqst file. Click **Next** and you will be presented with a screen which reads **You have completed your license management task**. Click **Finish**.

After saving the .rqst file email it to [support@cat.co.za](mailto:support@cat.co.za) stating which specific license/s you require. Support will reply with a .pack file attachment that you then need to load onto your NVR.

### d. Load the .pack File to Update Your License

To load the .pack file follow the same process you followed with license retrieval (in catSite select Tools → Licensing) choosing **Upload a License .pack file to this unit**, as shown below:

- Auto update this unit's license
- License this unit using a product key
- Retrieve a license .rqst file from this unit
- Upload a license .pack file to this unit
- Advanced options

Navigate to the location where your newly received .pack file is stored. Select the file, and select the **Next** button. You will get the same finishing message as when you retrieved your .rqst file.

Now that your license is properly updated you can add an Observer.

## 4 Configure CathexisObserver Password (PC)

CathexisObserver 2017.1 now offers password management. Previously this was not a feature of CathexisObserver.

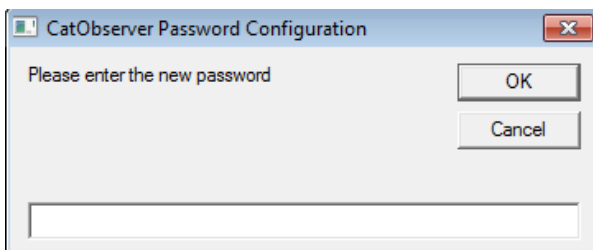
After installing CathexisObserver, you will need to configure an Observer password from your Windows programs menu. That will then be the password you enter when adding an observer in the CathexisVision software.

### a. Start Menu → All Programs/Apps

Open Start menu → All programs/Apps → CathexisObserver Password Configuration 

Click that and a password configuration window will open.

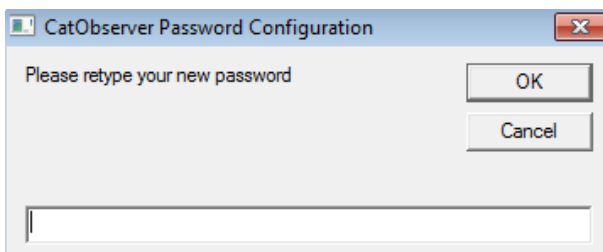
### b. Create Password



Enter the desired password and click **OK**.

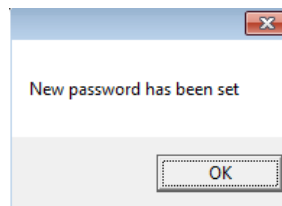
**NB:** This password will have to be entered when adding and viewing an observer in the CathexisVision software.

#### Retype new password



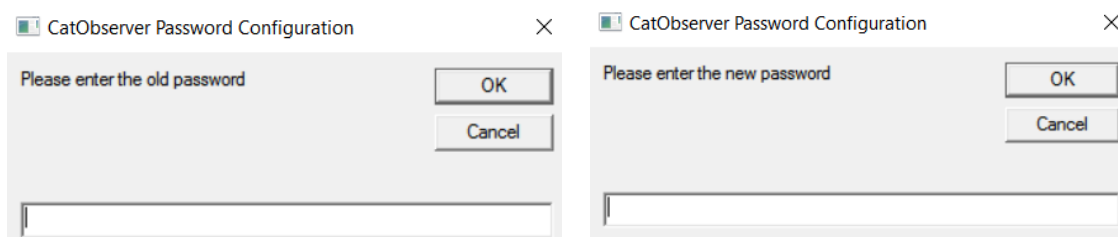
Re-type the new password you have created and click **OK**.

You will be presented with a completion window:



#### • *Change Password*

You will need to change the CathexisObserver password in the same way. You will be asked to enter in the **old password**, and then enter in a **new password** in its place.

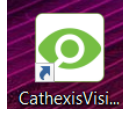




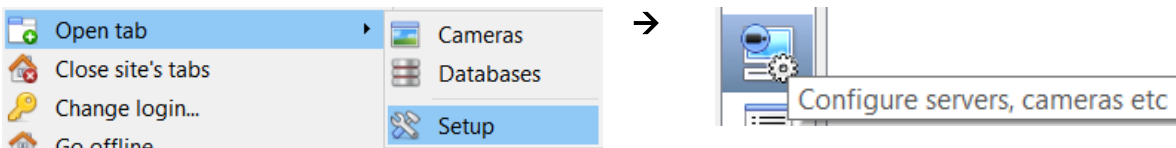
## 5 Add an Observer

All setups are centralized in the setup tab, and every setup follows a 'wizard' process that will be familiar to anybody who has used Windows.

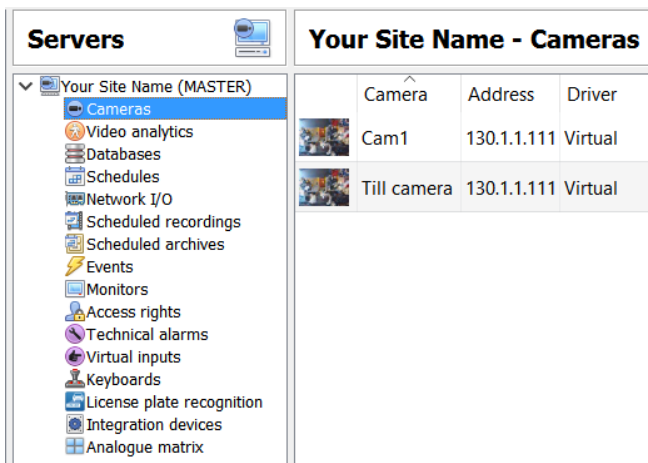
### a. Open CathexisVision



### b. Open the Setup Tab and select the 'Configure Servers' Option



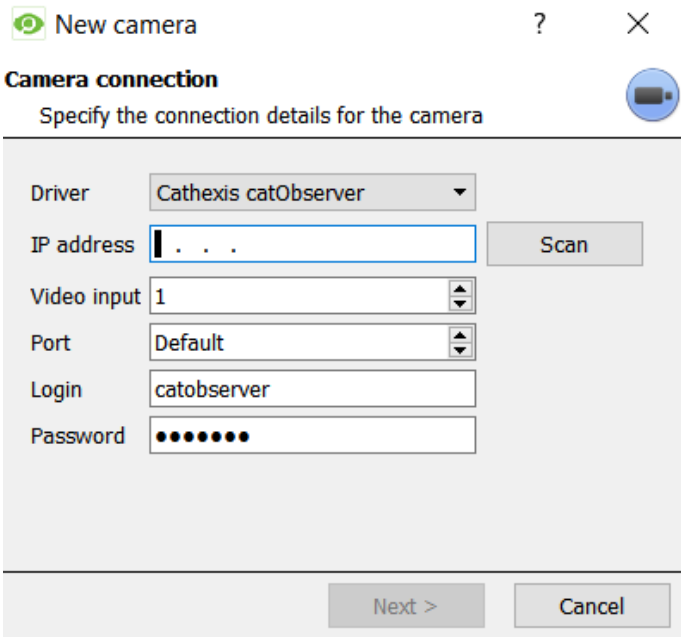
### c. Select the 'Cameras' in the drop down menu of the specific NVR you wish to record the Observer to.



This will open the Cameras tab in the panel to the right of the Servers panel. It is in this panel that you manage cameras/encoders on the specific server that you are dealing with. You need to add the CathexisObserver as you would a camera.

#### d. Click 'New' from the selection of buttons at the bottom of the window

Another way to open the wizard is to right-click any whitespace in the Cameras panel and select 'New'.



**Driver:** Select Cathexis catObserver driver from the dropdown menu.

**IP address:** This is the IP address of the unit whose screen you want to monitor, and **not:** the address of the NVR to which you are recording).

**Note:** When observing a screen on a local machine [i.e. observing the screen/s of the unit to which you are recording] you must set the IP address to 127.0.0.1

**Video Input:** This is the monitor you wish to record.

If you want to record more than one screen on an individual computer, you need to add one Observer encoder per screen. You will use the same IP address, but change the Video Input number to match the monitor you wish to record.

**Port:** Leave this at default.

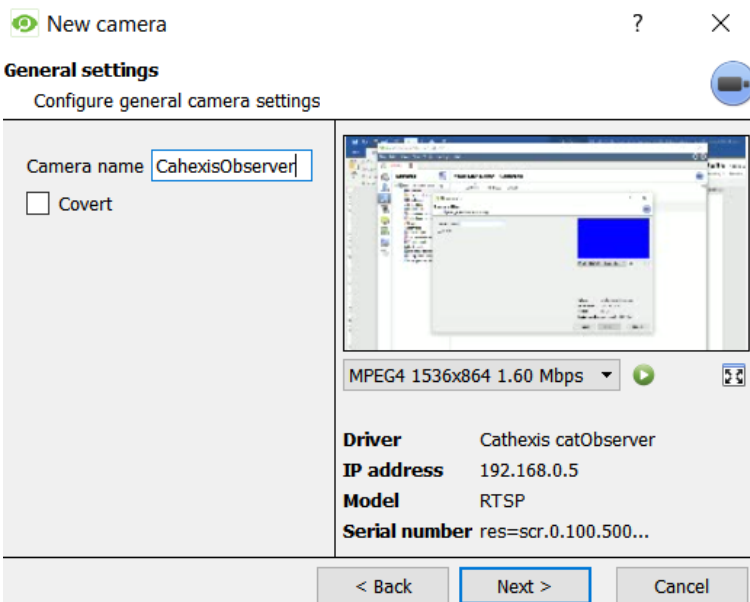
**Login:** Enter *catobserver*

**Password:** Enter the password you configured in **section 4** above.

When you are happy with the settings in this window click Next, this will take you to the General Settings Window.

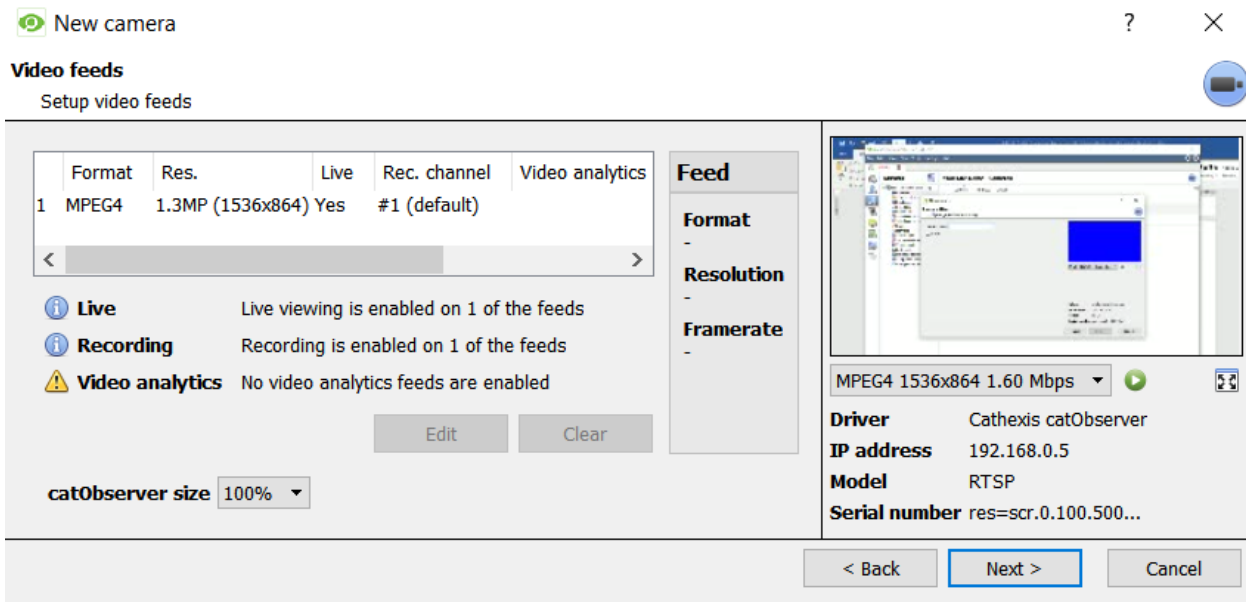
#### General Settings Window

Under General Settings you will chose the name of your Observer and set it either as an Overt or a Covert camera. There is a preview pane on the right which will show a paused screen capture of the feed from the Observer. To see a live stream click the drop down menu and select the stream that is available.

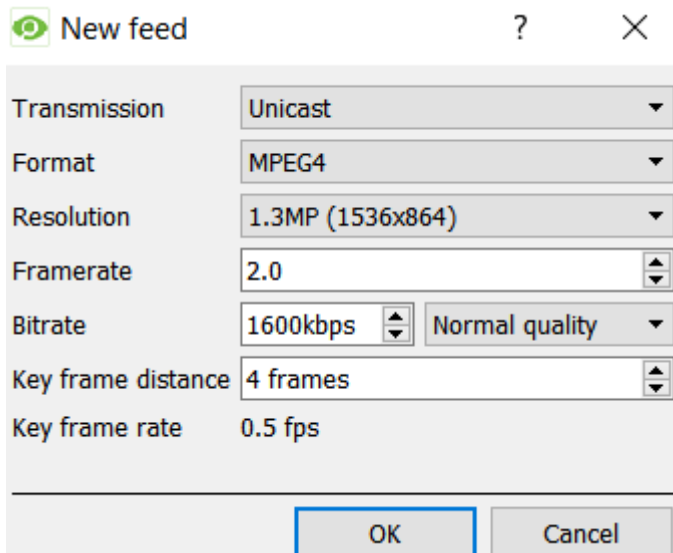


When you are happy with the settings in this window click Next to go to the Video Feeds window.

## Video Feeds Window



The Video Feeds window follows on from the General Settings Windows. There is a preset stream present, and the live preview pane is still present from the last window. You can edit the settings of the feed by either selecting the feed and then selecting the  button; or by simply double-clicking the feed that you want to edit. This will bring up the following window:



**Transmission:** Unicast is the only transmission option for the CathexisObserver.

**Format:** MPEG4 is the only format option for the CathexisObserver.

**Resolution:** Select from the dropdown menu.

**Frame Rate:** This is the number of screen captures the Observer will take per second.

**Bitrate:** Corresponds to the amount of information that the encoder will send over the network per second.

**Key Frame Distance:** The key frame rate is the number of key frames per second.

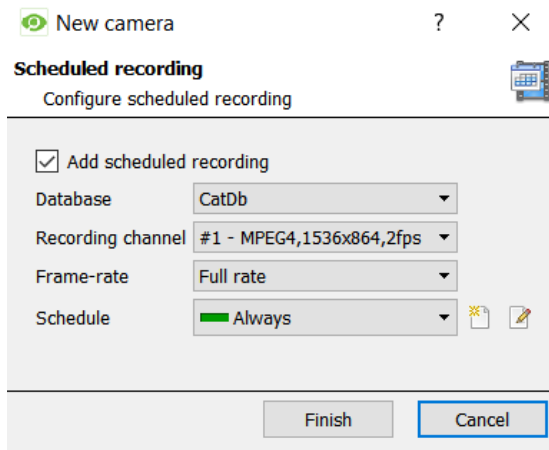
Click **OK**.

## PTZ

Leave PTZ unchecked.

## Scheduled Recordings

The Observer has now been added to the system. If you want to record the stream coming from the observer you will have to set up scheduled recordings [there is no Video Motion Detection on the CathexisObserver, so, other than setting up recording of the Observer based on other systemic events, scheduling recordings is the only way to record a CathexisObserver stream]. This can either be done now, or at a later stage. To do so now click 'Yes'. You may also create a new database to record the CathexisObserver to if you wish to separate out the CathexisObserver recordings.



**Scheduled recording**  
Configure scheduled recording

Add scheduled recording

Database: CatDb

Recording channel: #1 - MPEG4,1536x864,2fps

Frame-rate: Full rate

Schedule: Always



Finish Cancel

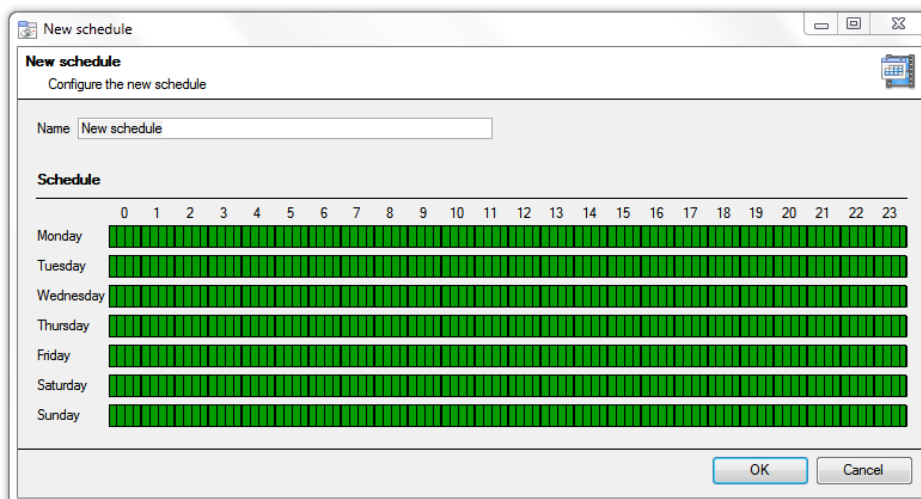
**Add scheduled recording** Check this option to schedule recordings of the Observer.

**Database:** Select the database that you wish to record the Observer to.

**Channel:** There will only be one channel available.

**Frame Rate:** This will designate how many of the frames captured by the CathexisObserver per second are recorded to the database. You will have the option of either Full Frame Rate, or Key Frames.

**Schedule:** The default will be set to record 24/7 under the profile Every Day. To create a new profile select , to edit an existing profile select . This will bring up the window below:



**New schedule**  
Configure the new schedule

Name: New schedule

**Schedule**

	0	1	2	3	4	5	6	7	8	9	10	11	12	13	14	15	16	17	18	19	20	21	22	23
Monday	Green	Green	Green	Green	Green	Green	Green	Green	Green	Green	Green	Green	Green	Green	Green	Green	Green	Green	Green	Green	Green	Green	Green	Green
Tuesday	Green	Green	Green	Green	Green	Green	Green	Green	Green	Green	Green	Green	Green	Green	Green	Green	Green	Green	Green	Green	Green	Green	Green	Green
Wednesday	Green	Green	Green	Green	Green	Green	Green	Green	Green	Green	Green	Green	Green	Green	Green	Green	Green	Green	Green	Green	Green	Green	Green	Green
Thursday	Green	Green	Green	Green	Green	Green	Green	Green	Green	Green	Green	Green	Green	Green	Green	Green	Green	Green	Green	Green	Green	Green	Green	Green
Friday	Green	Green	Green	Green	Green	Green	Green	Green	Green	Green	Green	Green	Green	Green	Green	Green	Green	Green	Green	Green	Green	Green	Green	Green
Saturday	Green	Green	Green	Green	Green	Green	Green	Green	Green	Green	Green	Green	Green	Green	Green	Green	Green	Green	Green	Green	Green	Green	Green	Green
Sunday	Green	Green	Green	Green	Green	Green	Green	Green	Green	Green	Green	Green	Green	Green	Green	Green	Green	Green	Green	Green	Green	Green	Green	Green

OK Cancel

The green cells indicate time segments during which the Observer will record.

To **select** a time segment for recording left-click at beginning of the time you want to be recorded and, holding down the mouse button, drag the mouse to the end point, then release the mouse button.

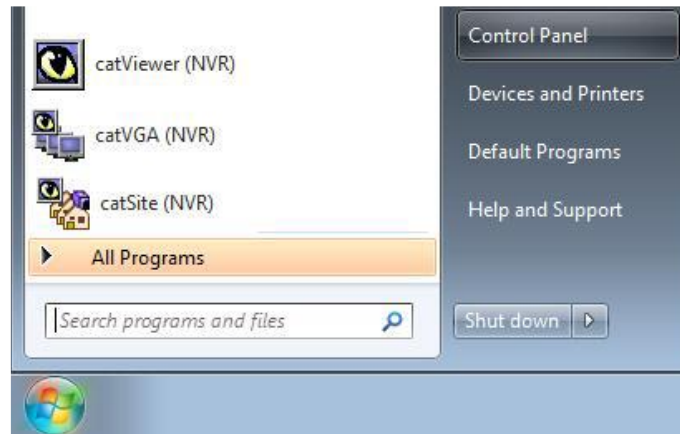
To **de-select** a time period right-click on the beginning of the period you do not want recorded and, holding down the right mouse-button, drag the mouse to the end of the period you don't want recorded.

Once you are happy with your schedules click **OK**. Congratulations, you should now have a running and recording CathexisObserver.

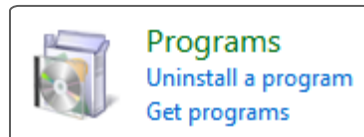


## 6 Uninstall

### a. Start → Control Panel



### b. Uninstall a Program



### c. Select the CathexisVision Program that You Want to Uninstall, and Click Uninstall

